

<http://news.buzzbuzzhome.com/2016/10/park-club-condos-70-per-cent-sold.html>



## The Park Club Condos hits 70 per cent sold mark in North York's Emerald City

**SPONSORED** Oct 27, 2016

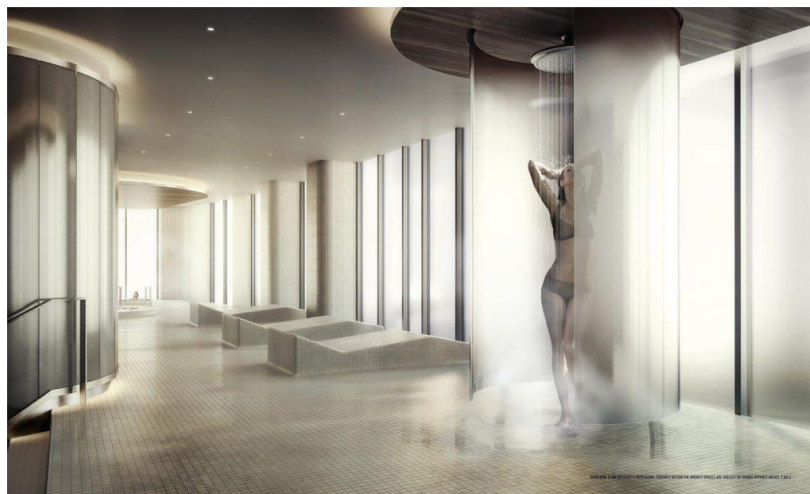


With all three towers now well under construction, Block B at Emerald City by [Elad Canada](#) is seeing a hotbed of activity. Also known as Phase 2 of the 20-acre community, Block B consists of the 13-storey [The Colours of Emerald City](#), 24-storey [Fifth on the Park](#), and the 33-storey [Park Club Condos](#). All three towers boast sleek and contemporary architecture by [WZMH Architects](#) with each featuring a unique design using elements and materials that blend harmoniously with each other.



Situated on the south side of the block, Fifth on the Park will rise above a three-storey podium that links to The Colours of Emerald City. The two condos will share a wide range of amenities that include a well-equipped fitness room, swimming pool, hot tub, his and hers saunas and a hotel-style guest suite. An ideal spot for entertaining, the outdoor terrace includes barbecue and dining areas, as well as access to the swimming pool. For indoor entertainment, a separate party area is equipped with an indoor dining room, lounge, screening room, karaoke room and an arcade/games centre.

Opposite Fifth on the Park, on the north end of the site, The Park Club Condos is the third and final building in Block B. The 265 unit-point tower has been a resounding success and is already 70 per cent sold since previewing last summer. However, there's still a great selection of suites to choose from so be sure to register today for the upcoming public grand opening!



Residents of The Park Club will have exclusive access to The Park Club Spa filled with luxury amenities like Scandinavian-inspired plunge pools, heated stone beds, individual change rooms with showers and a serene meditation room. Other amenities include a 24-hour concierge, Zen terrace, yoga room, multi-purpose room and a fully-equipped gym and personal training area. Even more amenities are just across the street in the newly opened Parkway Forest Community Centre. The state-of-the-art facility includes a full-size gymnasium and running track, YMCA-run daycare, dance studios, rooftop garden, and a commercial teaching kitchen.



If that's not enough, the amenity-rich area is dotted with shopping centres, schools, and recreational facilities. Whether you choose to indulge in a day of shopping at the nearby Fairview Mall, or hit the links at the nearby Bayview Golf and Country Club, there's no shortage of things to do! And with the Don Mills subway station only steps away, along with easy access to Highways 401, 404 and the DVP, getting to other parts of the city is quick and convenient. Prices at Fifth on the Park start at \$264,900 and \$272,900 at The Park Club Condos. To learn more about these developments, visit the presentation centre on Sheppard Avenue, just east of Don Mills Road, across from Fairview Mall. Hours are Monday to Thursday from 11am to 6pm and weekends from 12pm to 5pm.

*For more information, call 416 492 0001 or visit [emeraldcitylife.ca](http://emeraldcitylife.ca).*